

**LEGEND**

**MONITORING LOCATION**

- ◆ METHANE MONITORING PROBE
- GROUNDWATER MONITORING WELL
- △ DIRECT-PUSH LOCATION (GOLDER, 2009)
- SEEP (GROUNDWATER)
- INFERRED LIMIT OF VOCs IN GROUNDWATER

GROUNDWATER QUALITY - SELECT VOLATILE ORGANIC COMPOUNDS:

MAXIMUM 2010 CONCENTRATION

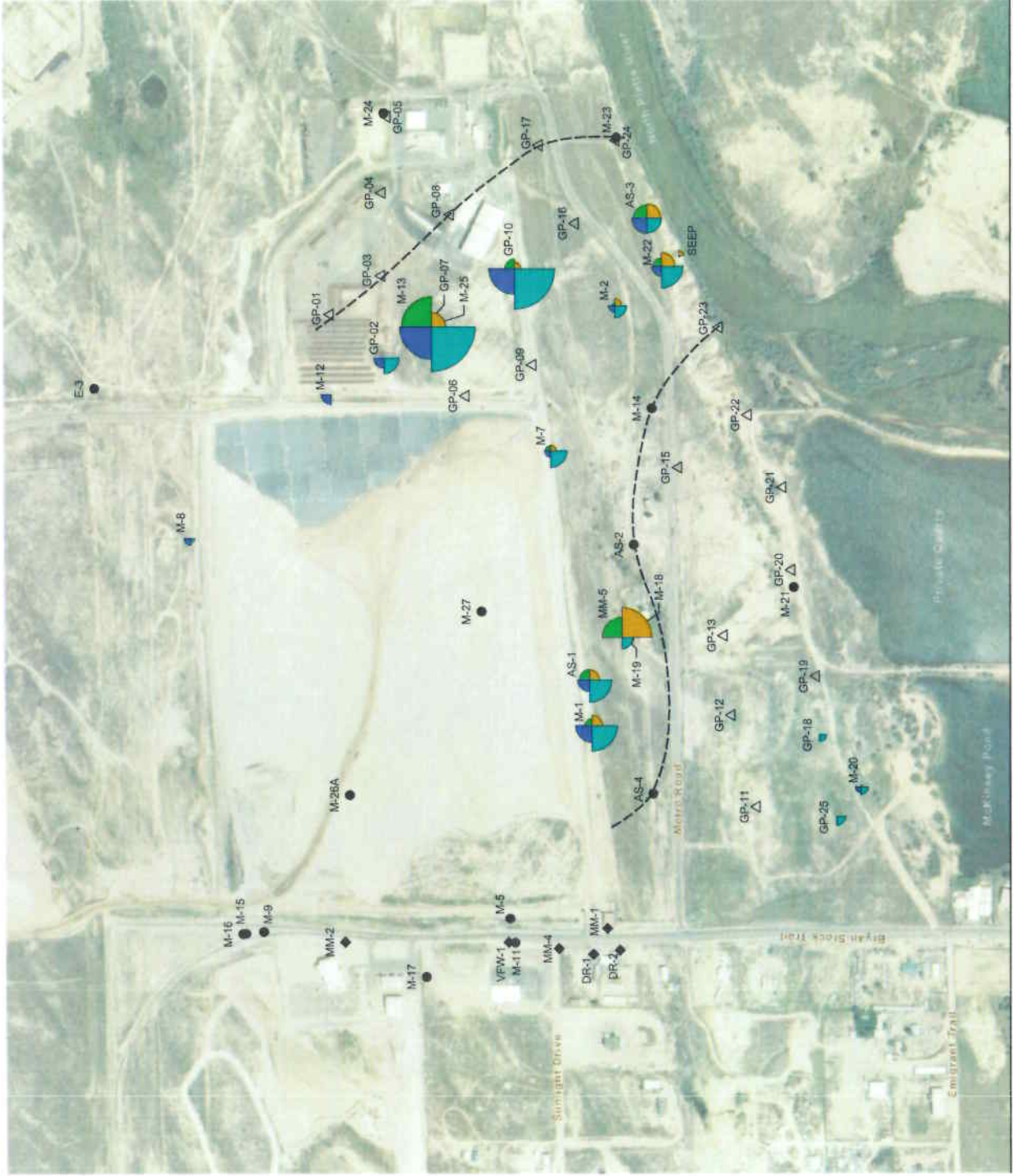


**NOTES**

1. SIZE OF PIES REPRESENT RELATIVE CONCENTRATION VALUES.
2. PIES NOT SHOWN INDICATE LOCATION WAS EITHER NOT SAMPLED OR DATA WAS NOT DETECTABLE.

**REFERENCES**

1. AERIAL PHOTOGRAPHY: USDA-FSA APFO, 2009. COORDINATE SYSTEM: NAD 1983 STATEPLANE WYOMING EAST CENTRAL FIPS 4903 FEET.



PROJECT: NATURE AND EXTENT OF CONTAMINATION  
CITY OF CASPER BAILEFILL  
CASPER, WY

TITLE: 2010 MAXIMUM VOCs IN  
GROUNDWATER

PROJECT NO. 103-1544 FILE NO. 103194A003  
SCALE AS SHOWN (REV. 1)



FIGURE 9